

Scan-X CX Series

Mail & Carry-on Baggage X-ray Inspection System



www.scanxsecurity.com

Technical Features

- Unsuppressed high image quality with wire resolution up to 40AWG
- Advanced dual-energy material classification technology can accurately detect threats and contraband
- Efficient operating with ergonomically designed user interface
- Threat Image Projection (TIP) ready X-ray systems
- Optimized concept of operations, centralized image identify and storage capability implemented by various network applications
- Compact and portable design enables minimal footprint and rapid relocation

Summary

Scan-X Limited offers a series of X-ray inspection systems for mail and carry-on baggage screening, required by all security and customs applications. The mail and carry-on baggage X-ray inspection system comes from the best proven CX products platform, which features new optimized X-ray generator, high resolution detectors, ergonomic user interface, advanced imaging enhancing algorithms, powerful functions and network applications with high reliability, safety and economy.

With various tunnel size and portability, the CX mail and carry-on baggage X-ray inspection system can fully meet the requirements at airports, mass transit stations, critical infrastructures, post offices, and big events, etc.

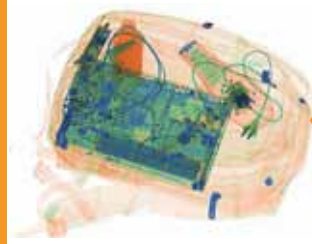


Scan-X Security Limited,

Unit 5, Bentley Lane Industrial Estate, Bentley Lane, Walsall WS2 8TL.

T: 01922 616360 F: 0121 275 6048 E: sales@scanxsecurity.com www.scanxsecurity.com

Scan-X CX Series Mail & Carry-on Baggage X-ray Inspection System



Advanced material classification:
Orange for organic, blue for metal
and green for mixed material



Automatic detection and
alarm of contrabands

Technical Data

General Specifications

Technical Principle	Dual-energy X-ray Imaging
Image Display	17" color LCD, high resolution of 1280×1024
Image Enhancement	Color/BW, negative, high/low penetration, organic /inorganic stripping, general enhancement, and pseudo color, etc.
Image Zoom	Stepwise/stepless zoom, up to 32 times enlargement
Image Recall	All preceding images recallable
Explosives & Narcotics Detection	Explosives & narcotics alarm and highlight according to atomic number signature
High Density Region Alarm	Impenetrable region alarm and highlight, for possible concealing of threats and contrabands
Threat Image Projection	Inserting fictional, but realistic images of threat items into baggage during screening operation, for maintenance of vigilance, as well as training and assessment of image identification capability
Image Archive	Up to 50,000 images stored automatically, enable transferring to USB disk, and converting to JPG, BMP and other general formats
Miscellaneous Functions	Time/date display, counters, user management, system-on/X-ray-on timers, power on self test, built-in diagnostic facilities, dual-direction scanning, system log, system standby and stimulant training, etc.
Network Applications	Multiple remote applications available based on Ethernet LAN and windows platform, such as image centralized storage and identify, recheck workstation, and network TIP, etc.
Radiation Safety	Less than 1μGy/h (5cm from the housing), complying with all published international standards
Film Safety	Guaranteed for high speed film up to ASA/ISO1600 (33DIN)

Products	CX5030T	CX6040BI	CX6550BI	CX7555B
Tunnel Dimensions (W×H)	534mm×333mm	606mm×420mm	655mm×503mm	755mm×555mm
Load Capacity	60Kg	160Kg	160Kg	160Kg
Conveyor Height	160mm	680mm	680mm	750mm
Wire Resolution	40AWG	38AWG	40AWG	38AWG
Steel Penetration	14mm	34mm	40mm	34mm
Dimensions (L×W×H)	1200mm×760mm ×780mm	2042mm×850mm ×1300mm	2042mm×920mm ×1400mm	2340mm×1000mm ×1500mm
Weight	140Kg	500Kg	600Kg	580Kg
Power Consumption	0.6kVA	0.6kVA	0.8kVA	0.8kVA

Note: Image performance specifications are based on test piece complying with GB 15208.2-2006



Scan-X Security Limited,

Unit 5, Bentley Lane Industrial Estate, Bentley Lane, Walsall WS2 8TL.

T: 01922 616360 F: 0121 275 6048 E: sales@scanxsecurity.com www.scanxsecurity.com